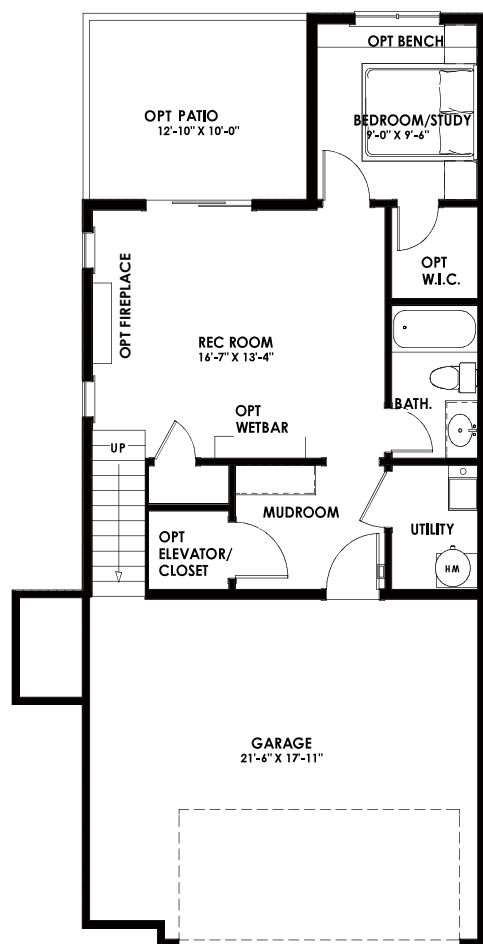


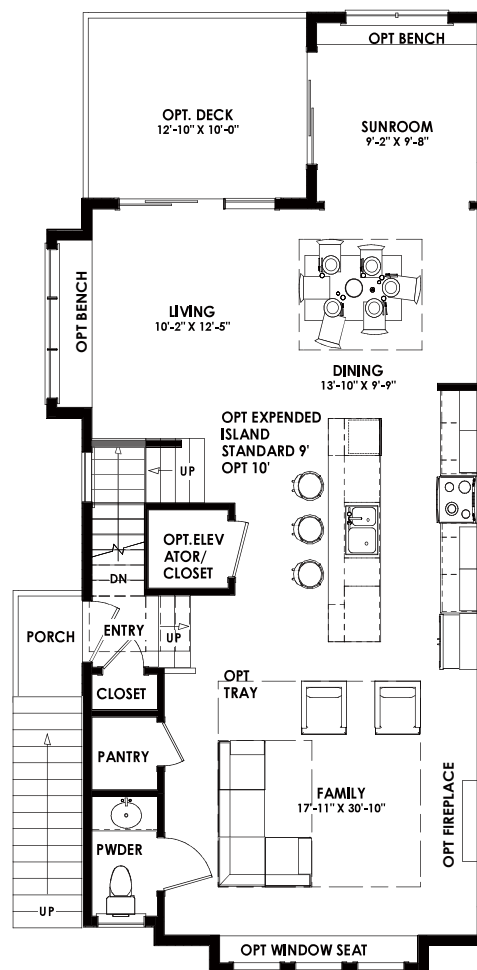


Morris St, Falls Church, VA 22043
Brand New 8 Units of Townhouse

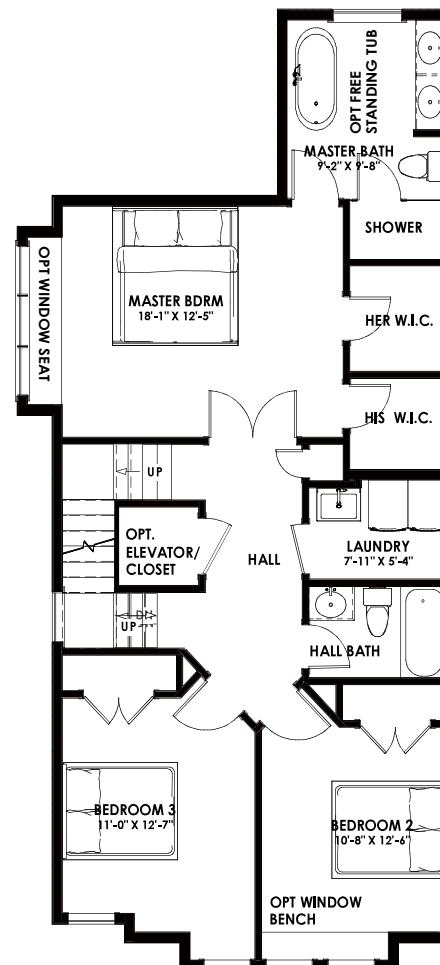
ONYX A (END UNIT)



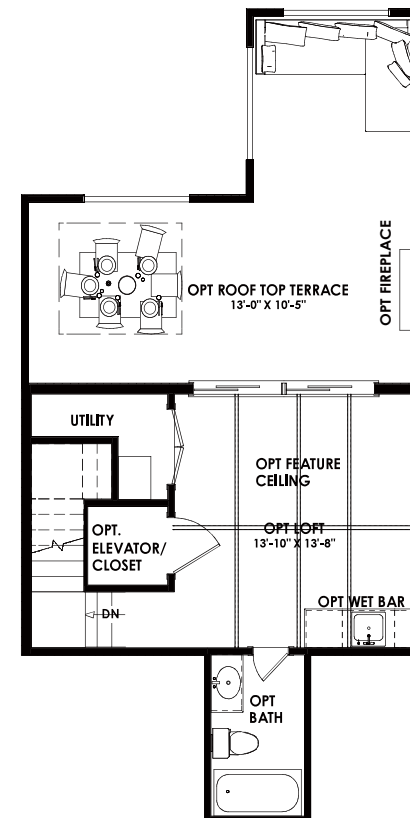
LIVING AREA
587 SQ FT



LIVING AREA
1017 SQ FT



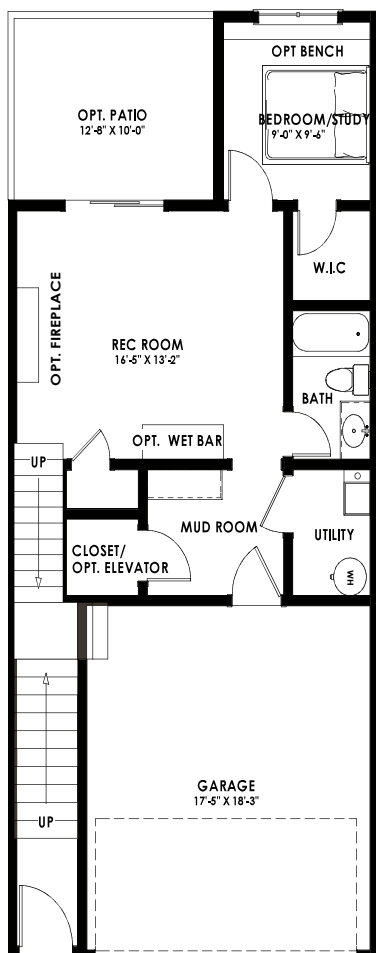
LIVING AREA
998 SQ FT



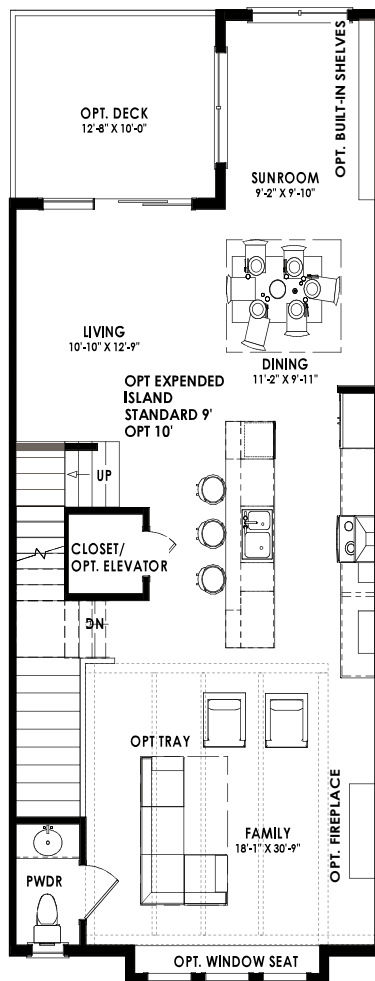
LIVING AREA
400 SQ FT

The floor plan is shown in the Onyx Style. All dimensions are approximate. Plans and specifications are subject to modifications and improvements without notice. Renderings are an artist's representations for illustrative purposes only. The information, plans, specifications, and designs contained in these drawings cannot be used or reproduced in whole or part without the written consent of Anchor Homes. All rights reserved.

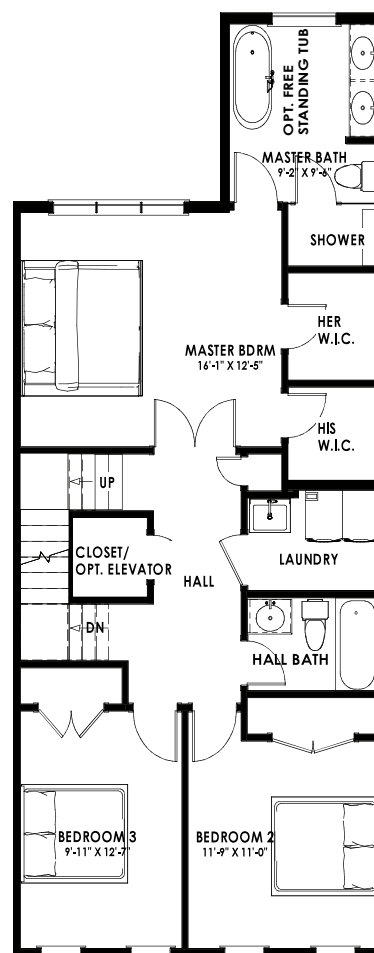
ONYX B (INTERIOR UNIT)



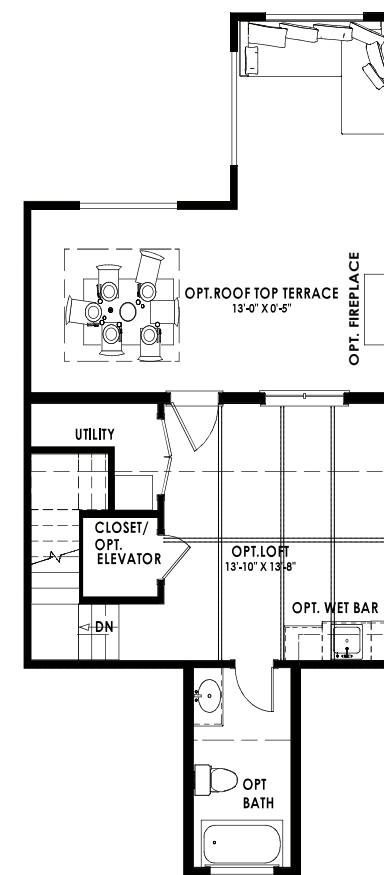
LIVING AREA
673 SQ FT



LIVING AREA
939 SQ FT



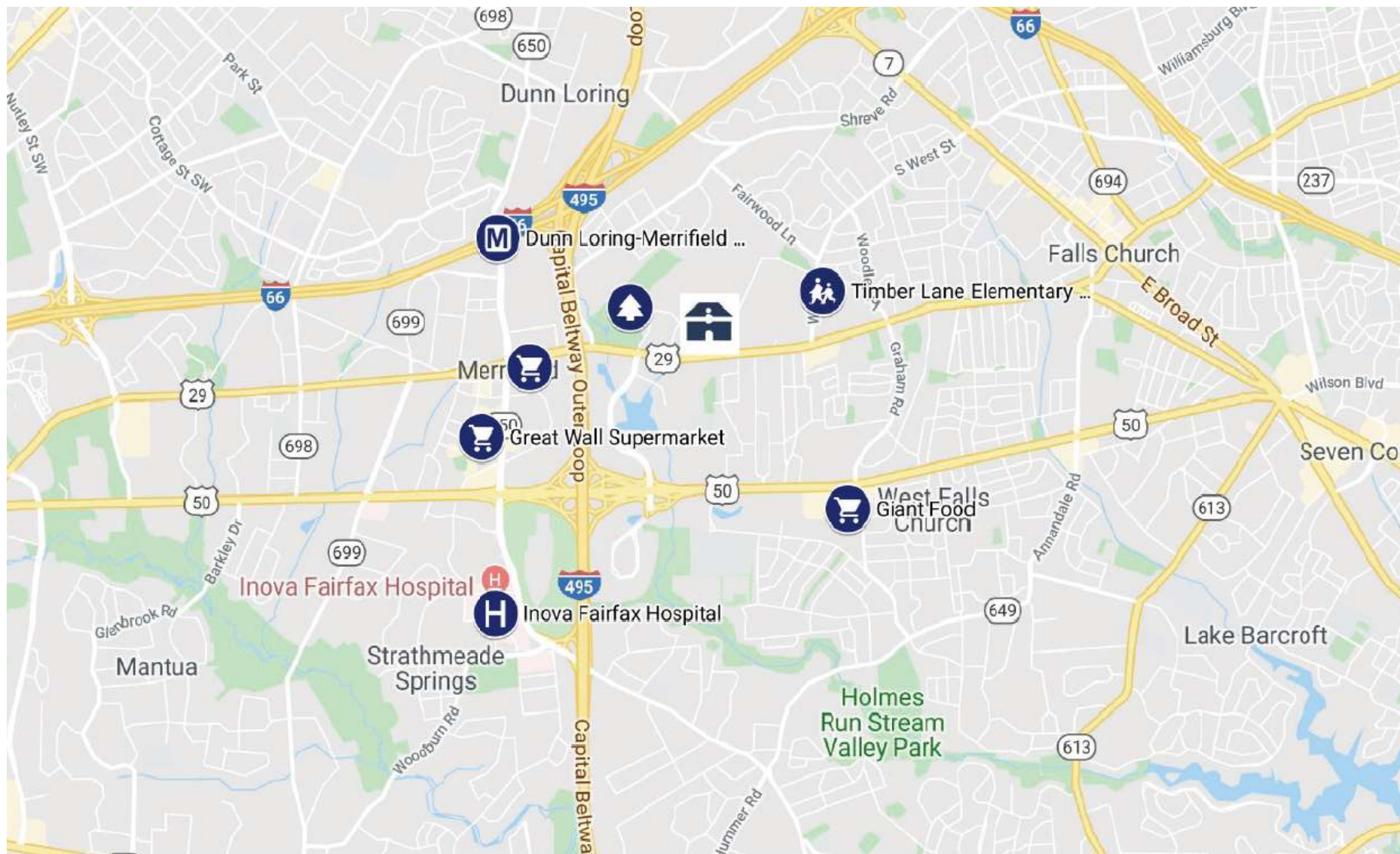
LIVING AREA
957 SQ FT



LIVING AREA
684 SQ FT

The floor plan is shown in the Onyx Style. All dimensions are approximate. Plans and specifications are subject to modifications and improvements without notice. Renderings are an artist's representations for illustrative purposes only. The information, plans, specifications, and designs contained in these drawings cannot be used or reproduced in whole or part without the written consent of Anchor Homes. All rights reserved.

Morris St, Falls Church, VA 22043



All plans, features, and specifications are believed to be accurate, but cannot be guaranteed. Anchor Homes LLC. reserves the right to change without notification. Components including but not limited to windows, doors, and room sizes may vary depending on the options and elevations selected. Optional items are available at additional costs. These floor plans are for illustration purpose only and are not part of any legal contract.

(703) 997-1618
anchorhomesllc@gmail.com
www.myanchorhomes.com