

# The Sandpiper



Front Elevation



Back Elevation

## The Sandpiper Square Footage

Main Level -----2,998SQ. FT.

Second Level -----3,299SQ. FT.

**Total Base House --- 6,297SQ. FT.**

Basement Level-----3,035 SQ. FT.

**Total ----- 9,332 SQ. FT.**

*Actual square footage may vary due to added options, chosen elevations, or amount of basement finish.*

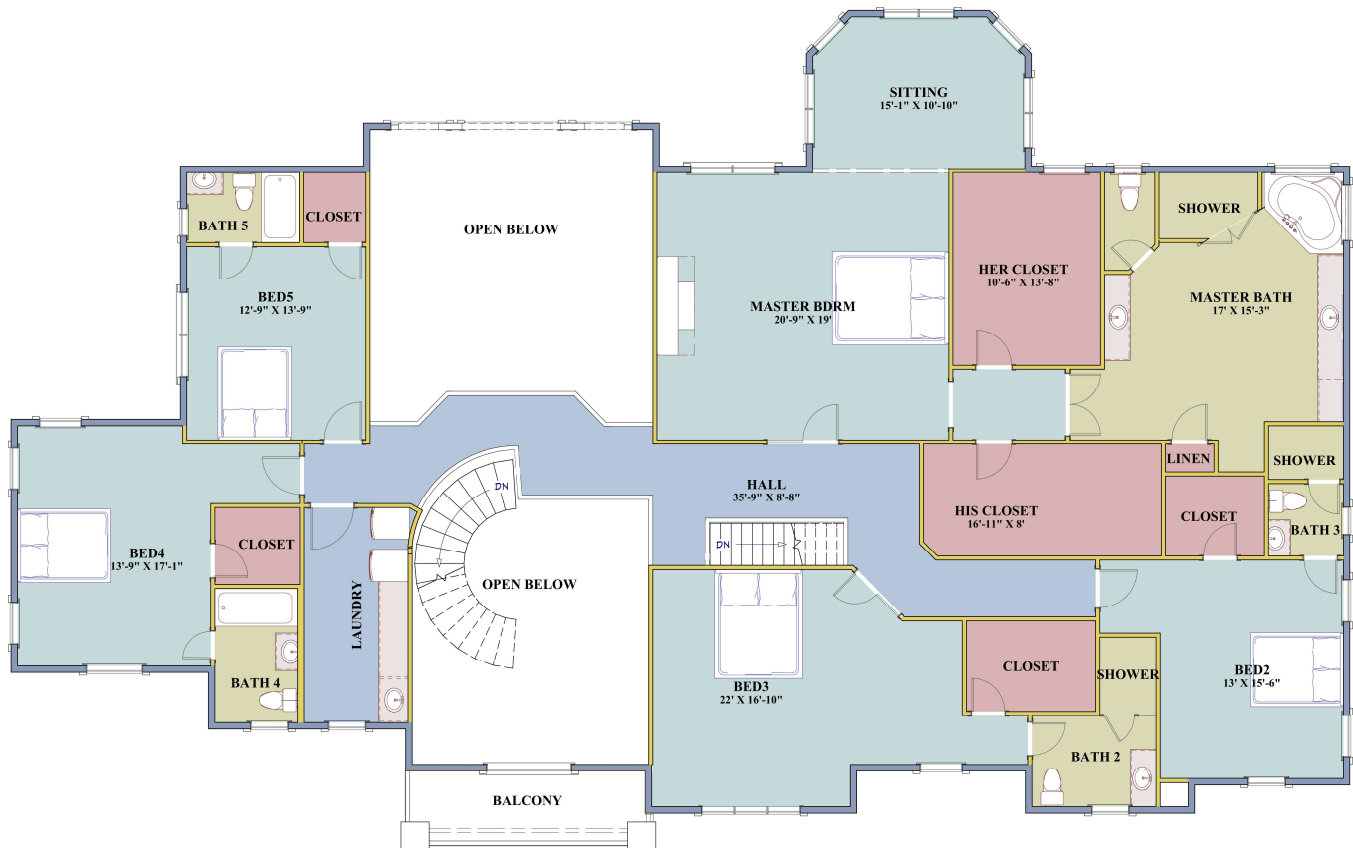
# Main Level

## the Sandpiper



# Second Level

## The Sandpiper



# Basement Level



45448 E Severn Way, Suite 105  
Sterling, VA 20166  
Tel: 703.997.1618  
Fax: 571.282.0999

## The Sandpiper (Optional Finished)



All plans, features, and specifications are believed to be accurate, but cannot be guaranteed. Anchor Homes LLC. reserves the rights to change without notification. Components including but not limited to windows, doors, and room sizes may vary depending on the options and elevations selected. Optional items are available at additional costs. These floor plans are for illustration purposes only, and are not part of any legal contract.



[anchorhomesllc@gmail.com](mailto:anchorhomesllc@gmail.com)



[www.MyAnchorHomes.com](http://www.MyAnchorHomes.com)