

The Willows



Standard Elevation



Upgrade Elevation

The Square Footage

Main Level ----- 1,940 SQ. FT.

Second Level----- 2,182 SQ. FT.

Total Base House --- 4,122 SQ. FT.

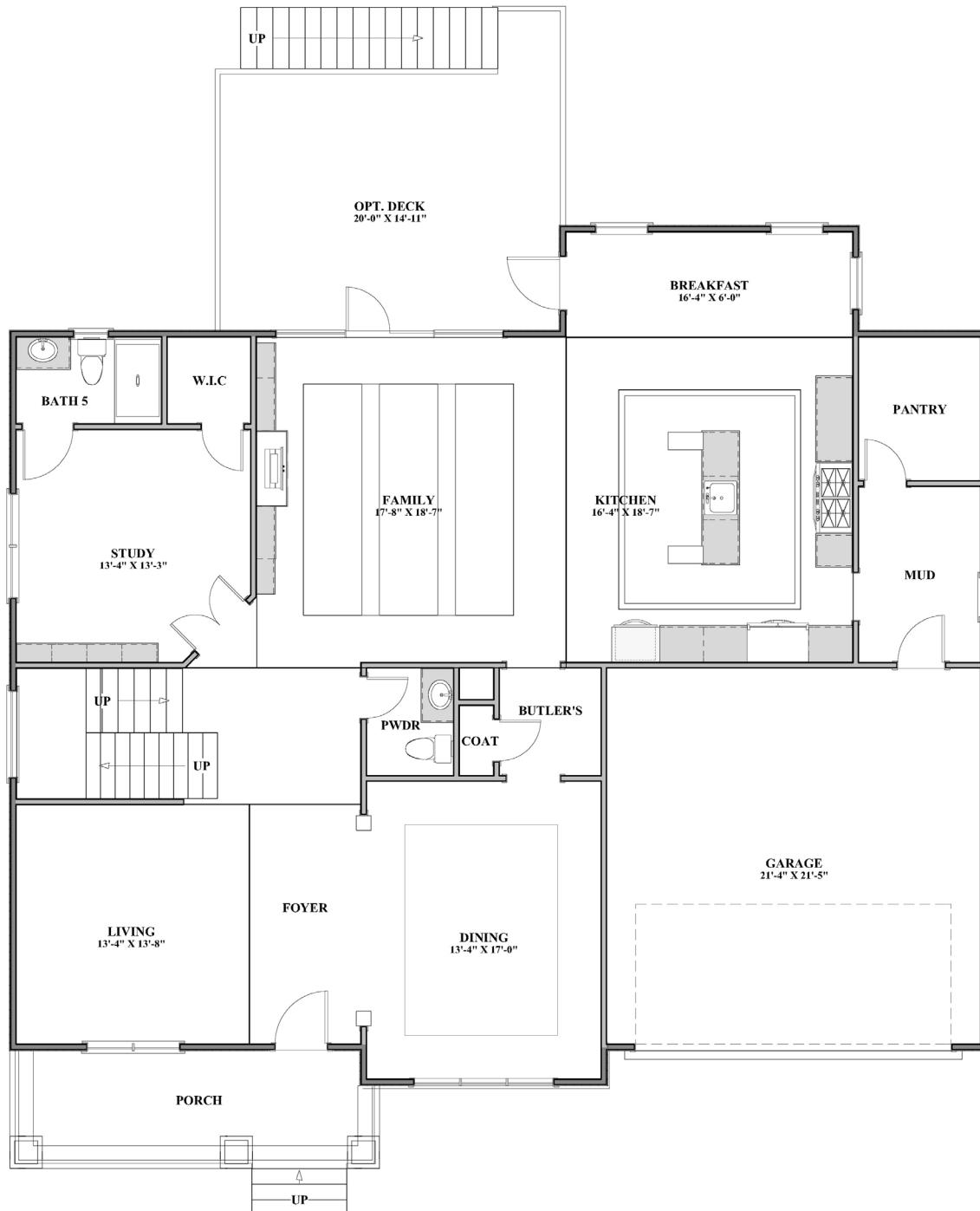
Basement Level ----- 1,491 SQ. FT.

Total ----- 5,613 SQ. FT.

Actual square footage may vary due to added options, chosen elevations, or amount of basement finish.

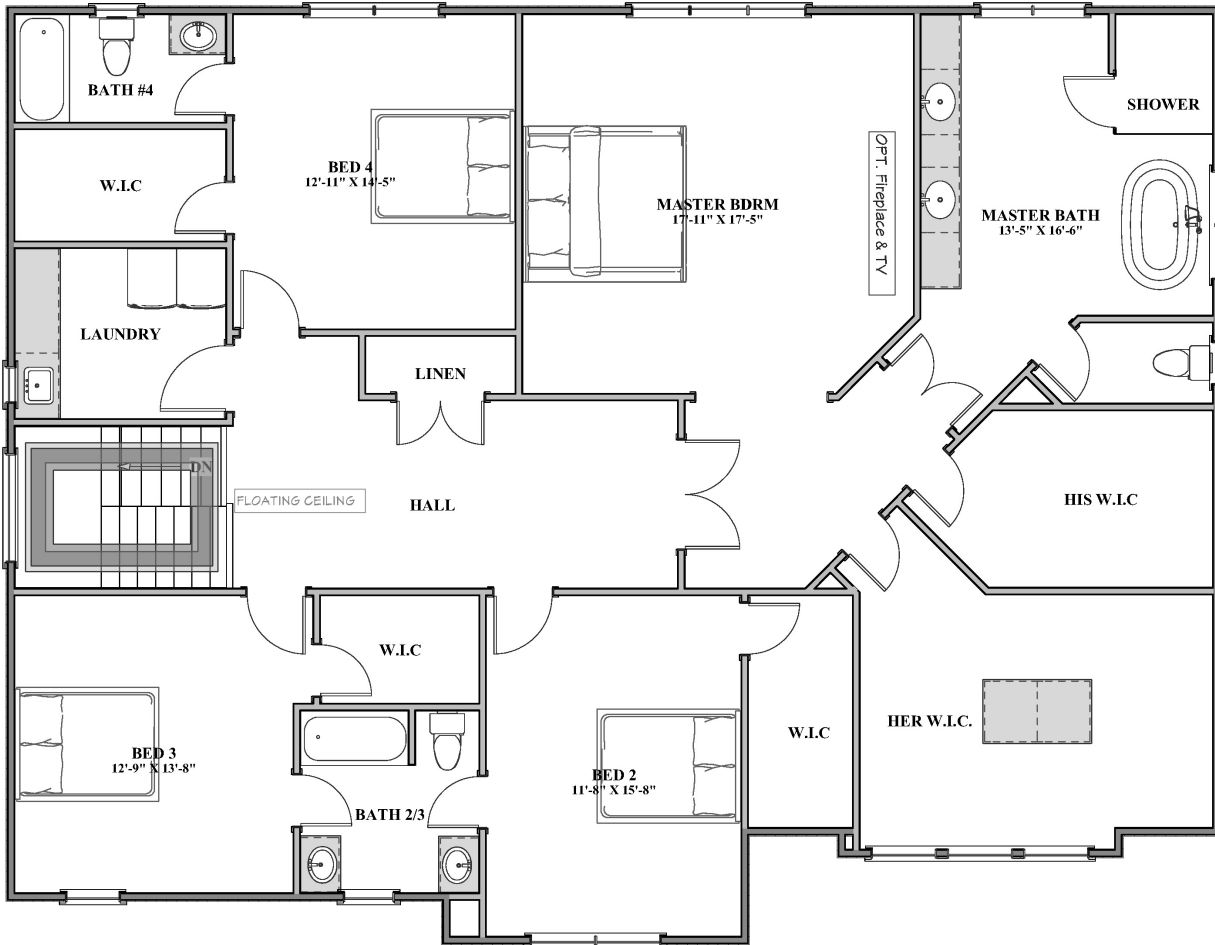
Main Level

The Willows



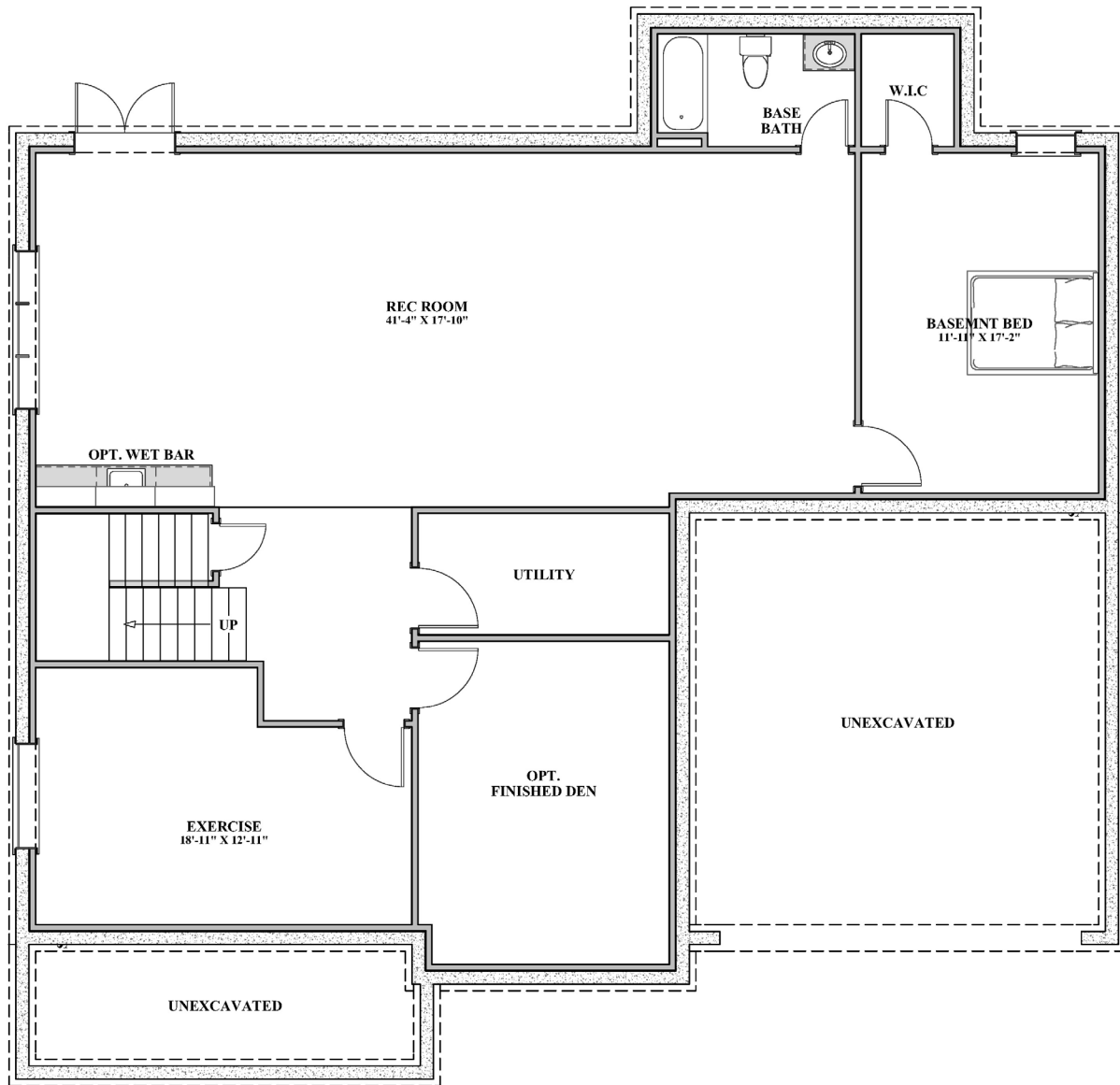
Second Level

The Willows



Basement Level

The Willows



All plans, features, and specifications are believed to be accurate, but cannot be guaranteed. Anchor Homes LLC. reserves the rights to change without notification. Components including but not limited to windows, doors, and room sizes may vary depending on the options and elevations selected. Optional items are available at additional costs. These floor plans are for illustration purposes only, and are not part of any legal contract.



anchorhomesllc@gmail.com



www.MyAnchorHomes.com